

1120- ZLS-V0 General Purpose Probe Station

The PSI 1120-ZLS-V0 probing station is an inexpensive flexible precision solution for general purpose probing requirements. It is designed to accommodate any rectangular printed circuit board up to 11.5" (29.21 cm) x 20.5" (52.07 cm). It provides a stable platform for probing while performing design or failure analysis. Choose up to 5 different manipulator models with a total of 12 configurations to choose from. Some of the manipulators have flexible 12-axis arms and adapters to attach any type of probe including high bandwidth oscilloscope probes, TDR probes, GGB (PicoProbes) and Cascade microprobes for vertical or horizontal probing applications.

The probe station has two horizontal platens movable in X and Z directions and accommodates up to 8 manipulators that can be attached by either vacuum or magnetic methods. The PSI 1120-ZLS-V0 comes standard with a 10x zoom CCD color camera for a 7" working distance, color monitor, and an articulating light source to eliminate shadows. The camera pivots so you can see the probe as it approaches the DUT, eliminating probe damage. The laser pointer eases camera to target setup and the optional horizontal Printed Circuit Board carrier accommodates up to 12" x 12" boards or semiconductor devices.

Specifications

Probe Station

- ◆ 11"W X 20"D viewable test area
- ◆ Two independent movable platens
 - Fine "Z" lift controls and "X" axis translation controls and lock
 - Holds 8 Probe Manipulators
- ◆ 24" X 24" Base Plate with, 10-32 mounting holes, on 2" centers, for custom fixturing

Optics

- ◆ 10X Zoom Lens CCD Camera System
- ◆ Manual Zoom & Fine Focus Magnification
- ◆ 7" Working Distance
- ◆ Magnification without .5 lens: 38.5X to 247.5X with 3.5 inch Working Distance
- ◆ NVIDEO-13-V1, 13" Color Video System
- ◆ Bright Fiber Optic Articulating Light System
- ◆ Articulating Laser Pointer highlights target

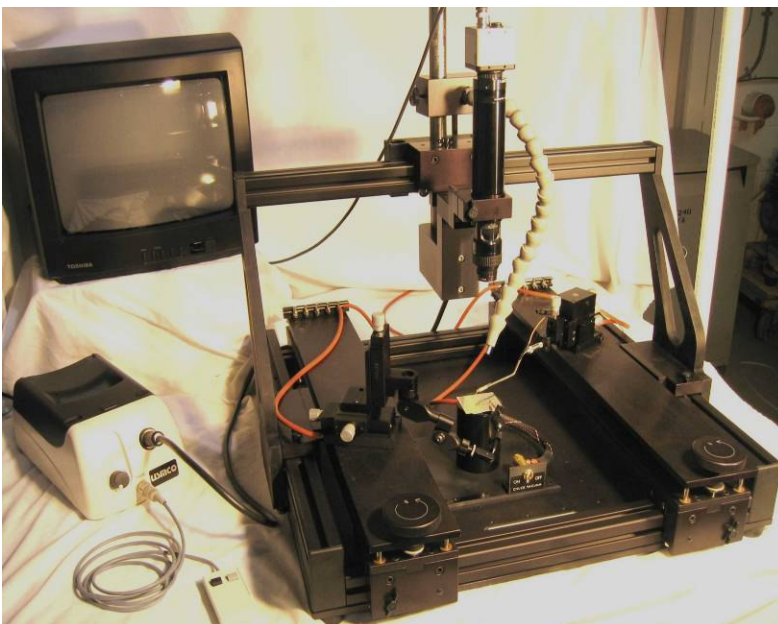
Manipulators

Choice of 5 models with a total of 12 configurations

- GP-12AR SERIES
- GP2-12AR SERIES
- SI-12AR-SERIES
- P SERIES
- P32-110/210 SERIES

Popular Options

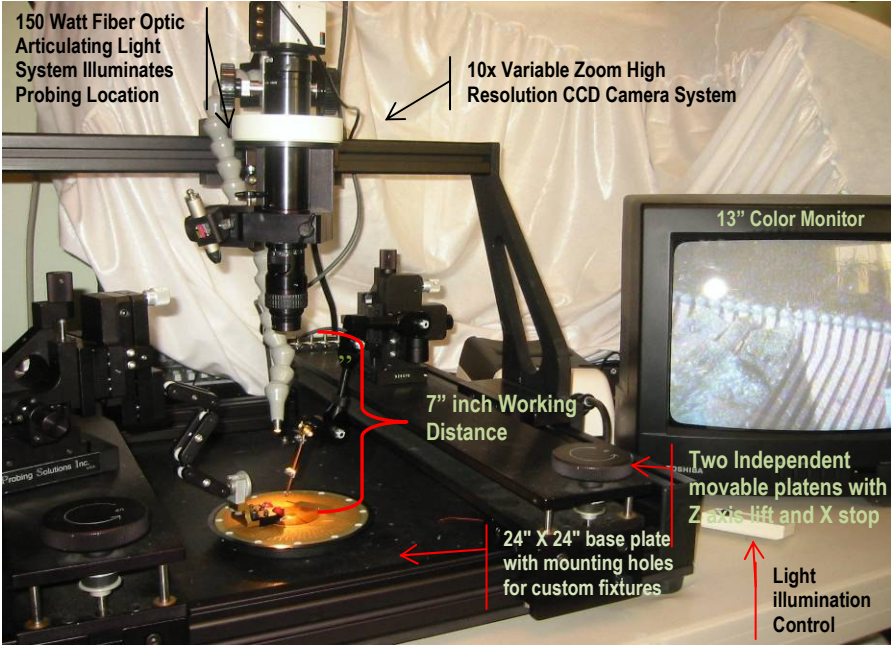
- ◆ **1120-FS-FRX:** 12 X12" PCB Fixture
- ◆ **AVPLN-V1:** Vacuum Pump, low noise 45db
- ◆ **FS-2-VB:** Fixed 2" x 2" Vacuum Chuck for holding BGA Packages and Calibration Substrates



1120- ZLS-V0 General Purpose Probe Station

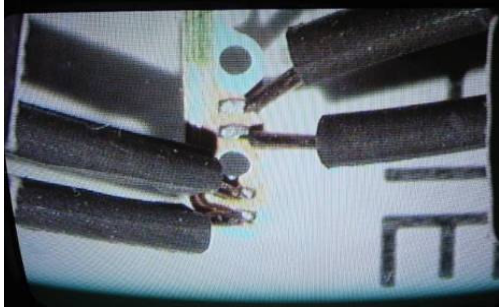
Applications

The 1120-ZLS-V0 Probe Station can be configured to fixture IC Packages and PCB's for precision probing with microprobes (Cascade, PicoProbes), TDR (GigaProbes™) and Active Differential probes connected to VNA, TDR or Real-time oscilloscope systems for extracting impedance, S-parameters and real-time parametric parameters for validating signal integrity compliance to design specifications or for locating opens or short for comprehensive Failure Analysis.

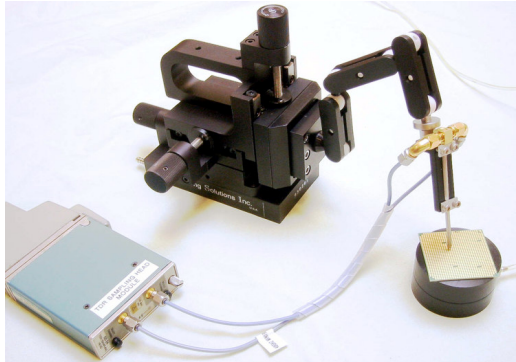


1120- ZL-V0 General Purpose Probe Station

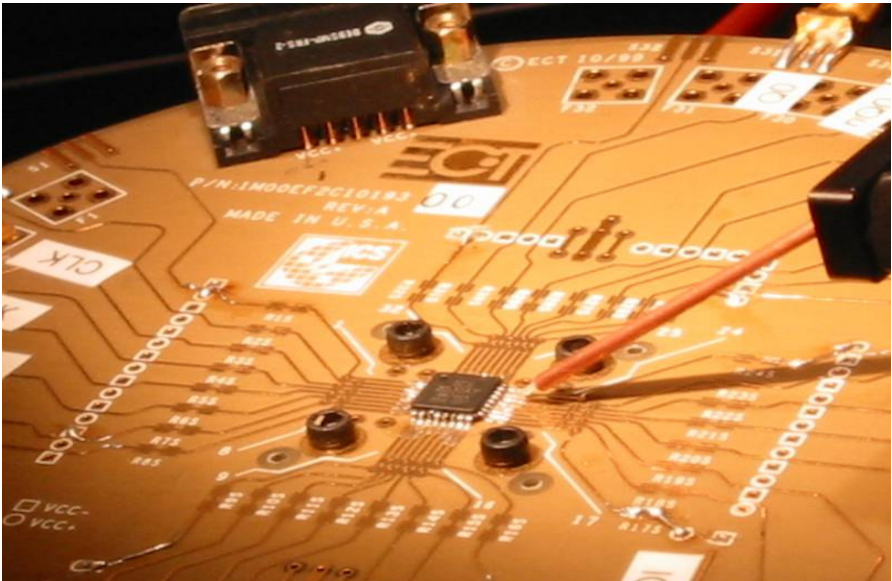
Everything you need for Package Failure Analysis, Active Signal Integrity, impedance and S-parameter extraction.



Display of a 4 port VNA probing configuration for extracting differential S-parameters shows hi resolution image of microprobes 7" away from the probing location.



Attach the GigaProbes™ 30 GHz 100/50 ohm TDR probe the GP and SI Series Manipulators for package and PCB impedance analysis. For more information visit www.gigaprobes.com



The 1120- ZLS-V0 Probe Station provides PCB fixturing and an articulating 150 watt articulating light system for PCB, Package, Signal Integrity, and Parametric Compliance Testing.



GP & SI Series manipulators adapts to all GGB Pico Probes, Cascade probes, Tektronix, Agilent and LeCroy Active Probes.